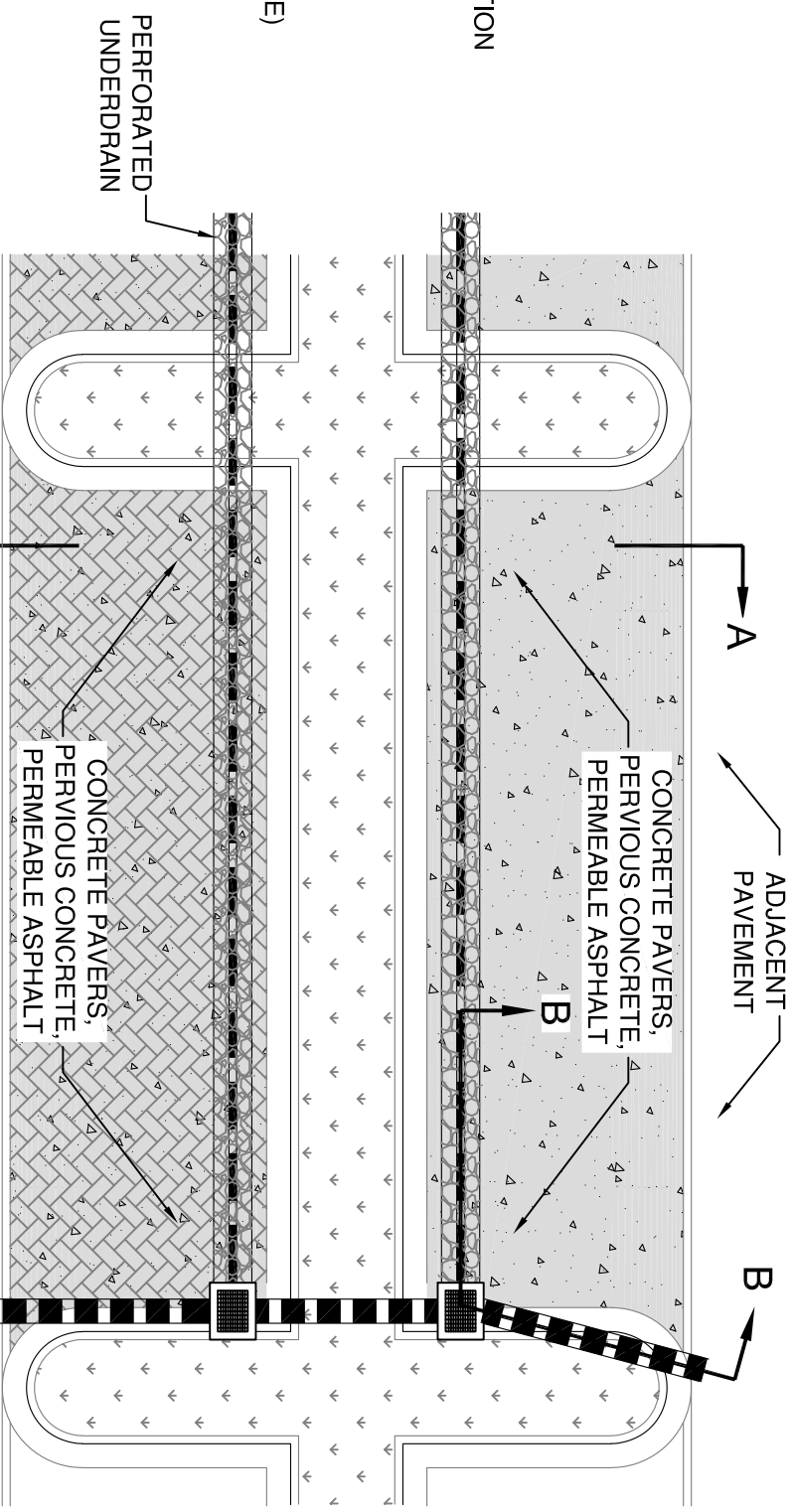


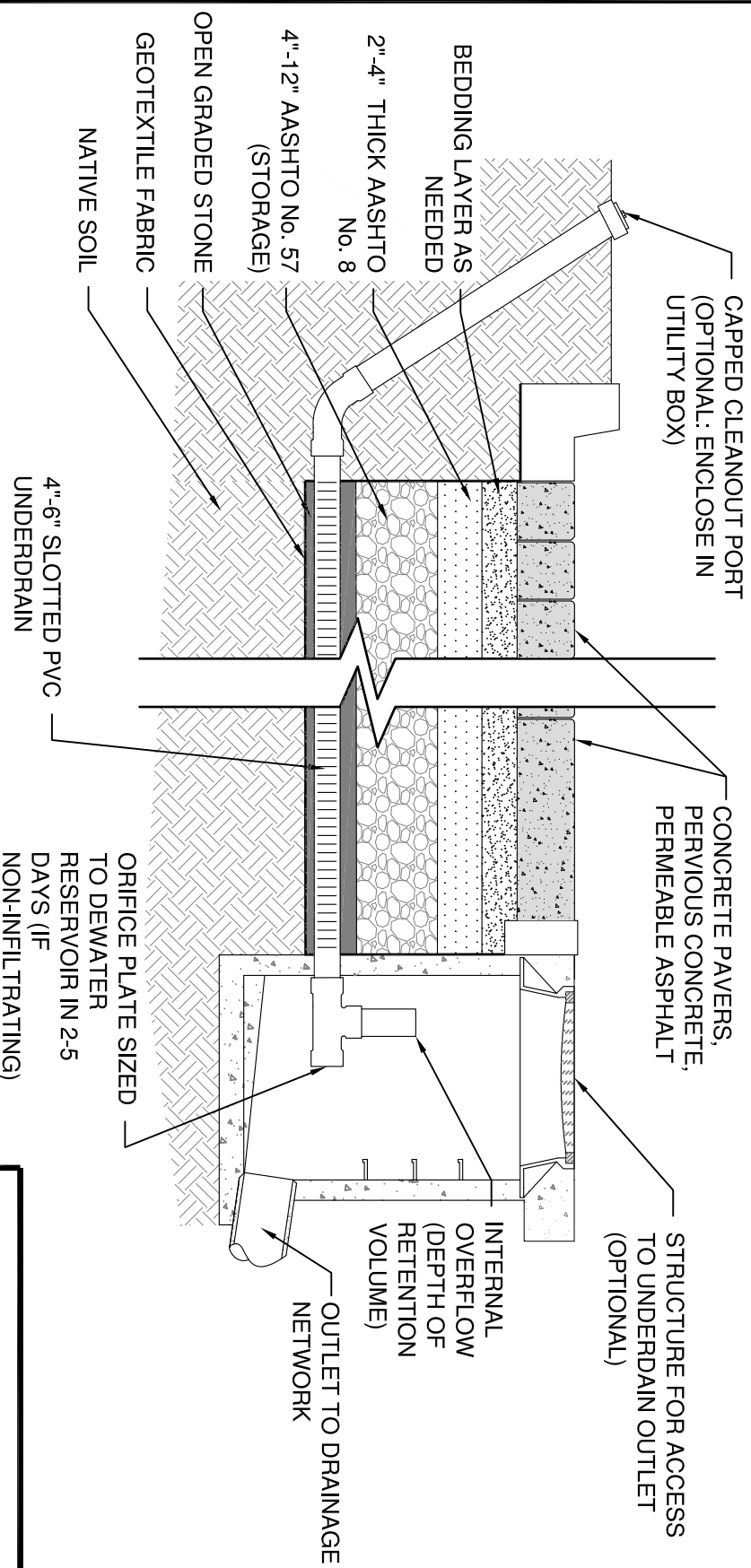
**PERVIOUS SURFACE SECTION A-A**

NTS



**PERVIOUS SURFACES PLAN**

NTS



**UNDERDRAIN PROFILE B-B**

NTS

- NOTES:**
- LID BMPs MUST COMPLY WITH GUIDANCE AND LID MATRIX IN ADDITION TO LOCAL AND STATE CRITERIA. THESE TEMPLATES ARE INTENDED TO REPRESENT TYPICAL DETAILS. EACH DETAIL WILL REQUIRE REVISIONS TO MEET SPECIFIC SITE CONFIGURATIONS AND CONSTRAINTS BEFORE INCORPORATION INTO DESIGN PLANS.
  - VERTICAL IMPERVIOUS LINERS MAY BE USED TO PREVENT LATERAL FLOW AND TO SEPARATE THE NATIVE SOIL, HOWEVER A HORIZONTAL LINER SHALL NOT BE USED UNLESS RECOMMENDED BY A GEOTECHNICAL ENGINEER AND A SUITABLE UNDERDRAIN SYSTEM IS PROVIDED. IF NO LINER, SCARIFY OR RIP SUBGRADE TO A DEPTH OF 9'-12".
  - INTERNAL OVERFLOW SHOULD BE PROVIDED FOR PERMEABLE INTERLOCKING CONCRETE PAVERS TO PREVENT DISLODGING AND TRANSPORT OF JOINT FILL MATERIAL BY UPWELLING WATER. PERVIOUS CONCRETE MAY BYPASS AT THE SURFACE WHEN FULL.
  - PAVEMENT SECTION AND UNDERLYING LAYER THICKNESSES AND SPECIFICATIONS SHALL BE BASED ON DETAILED GEOTECHNICAL REPORT.
  - WHEN NO IMPERMEABLE LINER IS SPECIFIED (WHEN INFILTRATION IS NOT PROHIBITED), SCARIFY OR RIP SUBGRADE TO DEPTH OF 9'-12" TO ALLEVIATE COMPACTION